

SDT / GROUND STATION



S
D
S

STAR TECHNOLOGIES is developing Spacecraft Design Tool/Ground Station (SDT/GS). SDT/GS is a Responsive Space Plug and Play-compliant ground station designed to self-configure to a Satellite Data Model (SDM) based satellite. SDT/GS allows for the browsing, command and control of a component or application's XTEDS messages at the individual variable level.

SDT/GS INCLUDES:

- Self-Configuring Interface
- Auto-generated command windows from XTEDS messages
- A built-in 6DoF simulator to test commands before they are sent to the actual spacecraft

VISUALIZE TELEMETRY WITH:

- 3D
- 2D Mercator
- X/Y Plots
- Monitor Pages
- Dashboards

EXPORT TELEMETRY TO:

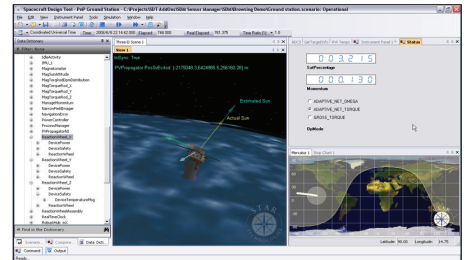
- SQL-Compliant Databases
- Log Files
- TCP/IP Socket Connects

Visit our products page for larger view of images
<http://www.sdt-startech.com/products>

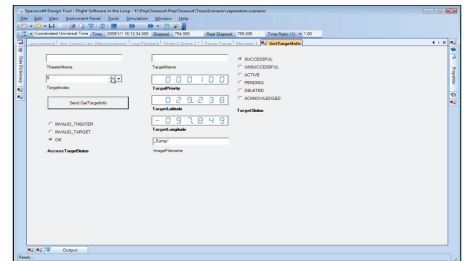
Visit our Online Demo Movies:
<http://www.sdt-startech.com/sdtGS>

Star Technologies Corporation
731 Walker Rd. Suite G1
Great Falls, Virginia 22066

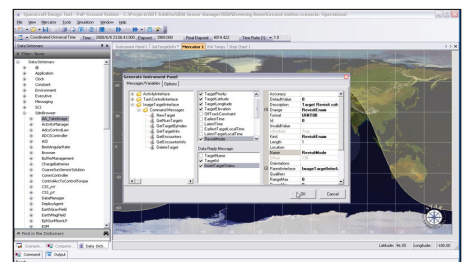
Phone: 703.759.2933
Fax: 703.759.3266
www.sdt-startech.com



3D interface showing SDM application's sun vector vs. actual sun position



Auto-generated interface



XTEDS variables browsing individual