

SATELLITE BUILDER



STAR TECHNOLOGIES has developed Satellite Builder, a graphical and physics level tool designed to rapidly assemble Plug-and-Play satellites. Satellite Builder uses 3D models of satellite components and automatically assembles a valid satellite configuration. Upon completion, Satellite Builder can generate an assembly plan and provide a set of instructions on how to assemble the actual physical satellite.

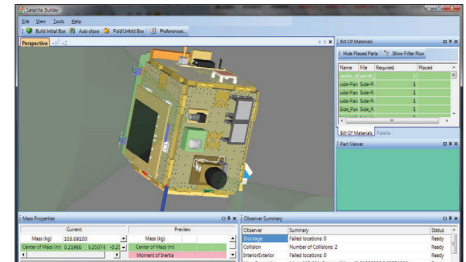
Satellite Builder is one of the new tools Star Technologies is releasing in support of AFRL's Operational Responsive Space office as a key element of achieving the stated ORS goal of a 6 day satellite.

Satellite Builder uses an autonomous algorithm to sequence through possible combinations of potential component locations and determine the best placement based upon a set of constraints such as internal/external placement, field-of-view, blockage, part count, and collision between components.

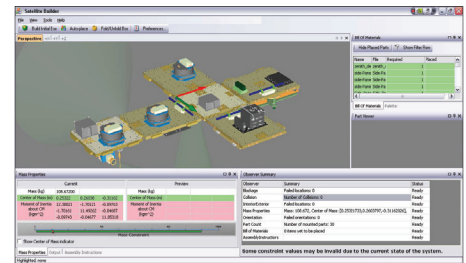
MORE THAN JUST A VISUALIZATION. Satellite Builder also dynamically calculates mass, center of mass, and moments of inertia as components are added or rotated.

The architecture of Satellite Builder is flexible and easily allows for additional functionality. Organizations in both government and commercial sectors will look for tools to not only rapidly prototype and build, but also reduce costs in the prototype and initial testing phases. Satellite Builder can add value not only to the rapid creation of satellites, but also unmanned vehicles, aircraft, and commercial situations where time to market is critical.

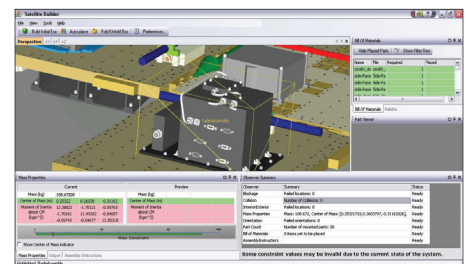
Visit our website for video demos and larger images:
<http://sdt-startech.com/SATBuilder>



Configurable Interface



Animation to visualize assemblies in different states



Supports high resolution 3D models

SAT BUILDER

Star Technologies Corporation
731 Walker Rd. Suite G1
Great Falls, Virginia 22066

Phone: 703.759.2933
Fax: 703.759.3266
www.sdt-startech.com